

IP CAMERA CONFIGURATION IN ENVIROMUX WEB INTERFACE

The IP cameras in the chart below can be monitored by the E-16D/5D/2D and be used to take snapshots and attach them to alert messages sent to users in the E-16D/5D/2D.

The images that are attached will be at the default resolution for each camera:

Model	Default Resolution	Current Firmware Version
E-IPCAM-HNPO-P	1920x1080	v2.800.00AC001.0.R, Build Date: 2020-09-04
E-IPCAM-DHNPO-V2P	1920X1080	v5.4.5 build 170124
E-IPCAM-WHNPT-V4	1920x1080	v2.800.0000000.1.R, Build Date: 2019-09-27

Materials Included:

Model	Power Supply
E-IPCAM-HNPO-P	100-240V @ 50/60Hz Input/ 12VDC 1A Output w/ country specific line cord
E-IPCAM-DHNPO-V2P	100-240V @ 50/60Hz Input/ 12VDC 1A Output w/ country specific adapter
E-IPCAM-WHNPT-V4	100-240V @ 50/60Hz Input/ 5VDC 1.5A Output w/ country specific adapter

To configure the IP camera to capture this image, enter the indicated text in the “Image URL” box on the “Configure IP Cameras” page of the ENVIROMUX Web Interface. Also add the URL Type, IP address, Username and Password as indicated.

For E-IPCAM-HNPO-P:

Image URL: `<IP ADDRESS>/onvifsnapshot/media_service/snapshot?channel=1&subtype=0`

URL Type: `JPEG`

Default IP Address: *see instruction on page 6*

Default Username: `admin`

Default Password: `admin` (if you change settings in the camera, you will have to change this.)

For E-IPCAM-DHNPO-V2P

Image URL: `<IP ADDRESS>/streaming/channels/1/picture`

URL Type: `JPEG`

Default IP Address: `192.168.1.64`

Default Username: `admin`

Default Password: `none`- enter the password you assigned when you setup the camera

For E-IPCAM-WHNPT-V4:

Image URL: `<IP ADDRESS>/onvifsnapshot/media_service/snapshot?channel=1&subtype=0`

URL Type: `JPEG`

Default IP Address: *see instruction on page 6*

Default Username: `admin`

Default Password: `admin` (if you change settings in the camera, you will have to change this.)

For all models, be sure to put a checkmark in “Enable HTTP Auth”..

Other ENVIROMUX Support

The IP cameras listed can all be **monitored only** (no snapshots) using the E-MICRO-TRHP. (The E-MICRO-TRHP requires firmware version 3.11 or newer).

The E-IPCAM-WHNPT-V4 and E-IPCAM-HNPO-P can be used with the E-MINI-LXO and it can be monitored and take snapshots to attach to alert messages.

Only the E-IPCAM-WHNPT-V4 and E-IPCAM-HNPO-P can be used with the E-1W model and it can only be monitored (no snapshots).

See compatibility table on next page.

Note: To use the E-IPCAM-WHNPT-V4 or E-IPCAM-HNPO-P with the E-MINI-LXO, E-1W, E-MICRO-TRHP and for E-mailing snapshots on the E-xD, you must first disable ONVIF Authentication in the camera's software. See page 7.

ENVIROMUX Model Compatibility

Model	Monitoring	Snapshots for alerts
E-IPCAM-HNPO-P	All Models	E-xD, E-MINI-LXO
E-IPCAM-DHNPO-V2P	E-xD, E-MICRO-TRHP	E-xD Only
E-IPCAM-WHNPT-V4	All Models	E-xD, E-MINI-LXO

Configure IP Cameras

IP Camera #1

Add to View Enable this camera in the View page

Name Name of the IP camera

Image URL Full path of the image file of the IP camera

URL Type **JPEG** Select IP Camera URL resource type. For RTSP URL's, management software is needed

IP Address IP address of the IP camera

Refresh Rate (x100 msec) Refresh rate of the image in hundreds of milliseconds

Enable HTTP Auth Use HTTP Authorization to access this camera

Enable Digest Access Use Digest Access Authentication to access this camera

HTTP Auth Username Username to be used in HTTP Authorization

HTTP Auth Password Password to be used in HTTP Authorization

IP Camera #2

IP Camera #3

IP Camera #4

Note: At present, the E-xD supports JPEG and MJPEG type images taken by the IP cameras we offer. The RTSP protocol option is not supported at this time.

Figure 1- E-xD IP Camera configuration page

IP Camera Settings

Name The name assigned for this IP Camera

Image URL Full path of the image file of the IP camera

IP Address IP address of the IP camera

Refresh Rate (x100 msec) Refresh rate of the image in hundreds of milliseconds

HTTP Auth Username Username to be used in HTTP Authorization

HTTP Auth Password Password to be used in HTTP Authorization

The E-MICRO-TRHP will work with cameras that have authentication, but does not include the ability to take snapshots that can be added to email.

Figure 2- E-MICRO-TRHP IP Camera configuration page

Configure IP Cameras

IP Camera #1	
Add to View	<input type="checkbox"/> Enable this camera in the View page
Name	<input type="text"/> Name of the IP camera
Image URL	<input type="text"/> Full path of the image file of the IP camera
IP Address	<input type="text"/> IP address of the IP camera
Refresh Rate (x100 msec)	<input type="text" value="0"/> Refresh rate of the image in hundreds of milliseconds

Figure 3- E-MINI-LXO IP Camera configuration page

IP Camera Settings

Name	<input type="text" value="IP Camera #1"/> The name assigned for this IP Camera
Image URL	<input type="text"/> Full path of the image file of the IP camera
IP Address	<input type="text"/> IP address of the IP camera
Refresh Rate	<input type="text" value="10"/> (x100 msec) Refresh rate of the image in hundreds of milliseconds

Figure 4- E-1W IP Camera configuration page

The E-MINI-LXO and E-1W do not support authentication. Only the E-IPCAM-WHNPT-V4 or E-IPCAM-HNPO-P can be used with them provided you first disable ONVIF Authentication in the camera's software.

Access Individual Camera Settings

E-IPCAM-DHNPO-V2P

To access the **E-IPCAM-DHNPO-V2P** web interface to change its settings:

1. Connect the camera to a POE connected Ethernet cable to power it ON, or connect the supplied 12VDC power supply. The Ethernet cable must be connected to the same local network your PC is connected to.

Note: By default, this camera obtains an IP address from a DHCP server on the local network. To find the IP address of the camera, consult the DHCP client list on the DHCP server of your wireless router or use the search tool (SADP.exe available from our [website](#)) and follow the instructions. (See image at bottom of page.)

2. Open a browser (Internet Explorer, Firefox, etc) on that PC and enter the IP address found with the search tool. If no DHCP server exists, the default IP will be **192.168.1.64**.

3. The first time you do this, the Activation window will pop up. Assign a password. The password must contain a minimum of 8 characters, including upper case letters, lower case letters, and numbers. **Note: No special characters can be used.** Be sure to make note of it after entering it. Then click "OK".

User Name: admin

Password: ❌

Valid password range [8-16]. You can use a combination of numbers, lowercase, uppercase and special character for your password with at least two kinds of them contained.

Confirm:

OK

If you are using the SADP discovery tool to identify the IP address of the **E-IPCAM-DHNPO-V2P**, you will be able to assign the password from the discovery tool window (below).

Total number of online devices: 2

ID	Device Type	Status	IP Address	Port	Software Version	IP Address Gateway	HTTP Port	Device Serial No.
001	DS-2CD2125FWD-I	Inactive	192.168.1.64	8000	V5.4.5build 1701...	192.168.1.1	80	DS-2CD2125FWD-I201706
002	DS-2CD2122FWD-IS	Active	192.168.3.113	8000	V5.5.0build 1707...	192.168.3.3	80	DS-2CD2122FWD-IS20180

Activate the Device

The device is not activated.

You can modify the network parameters after the device activation.

Activate Now

New Password:

Confirm Password:

Enable HiK-Connect

Activate

4. After the initial login and password assignment, the login screen will look like this.



5. Enter the username and assigned password. Then click “Login”.

You now have access to all internal settings of the camera.

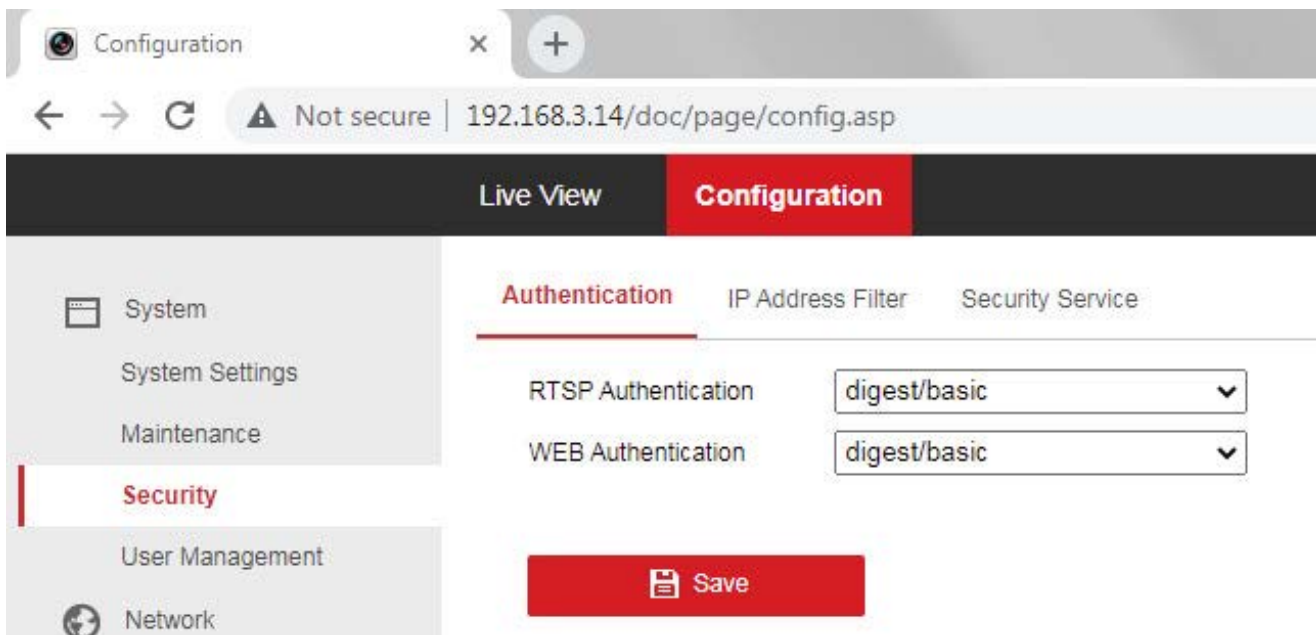
Note: In order to attach camera images to email or save them on a USB flash drive, either upgrade the E-xD firmware to version 4.18 and above OR a change to this IP camera’s default settings will be needed (below).

In the IP camera’s default settings, the camera will have the **RTSP Authentication** and **Web Authentication** configured for “**digest**”.

In this configuration, the IP Camera image will not be able to be attached to email or saved on USB flash drive on the E-xD unit with older E-xD firmware.

Under Security Configuration, change **RTSP Authentication** and **Web Authentication** to “**digest/basic**” (as shown below). Then be sure to press “**Save**”.

Once complete, the E-xD will be able to attach an IP camera image to email and save it to a USB flash drive.



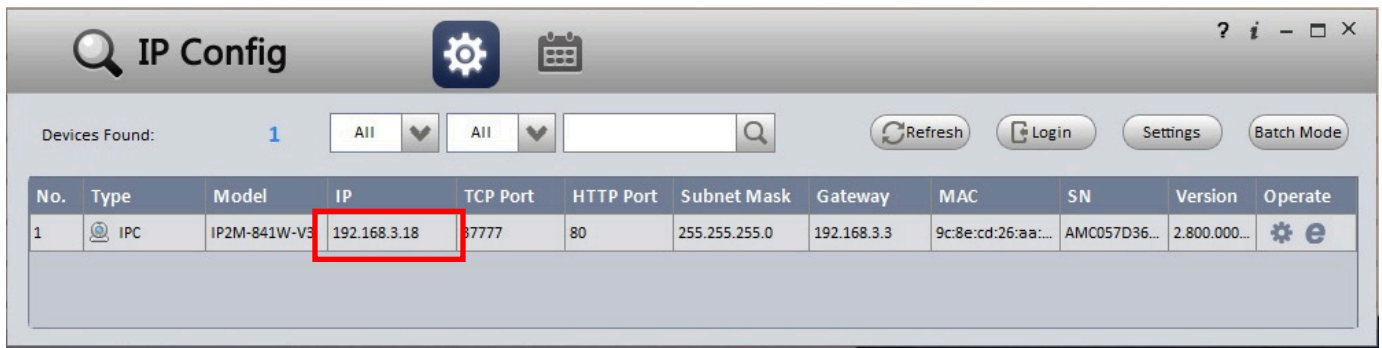
E-IPCAM-WHNPT-V4 and E-IPCAM-HNPO-P

To access the **E-IPCAM-WHNPT-V4** or **E-IPCAM-HNPO-P** web interface to change its settings:

1. Connect the AC adapter to the camera to power it ON. Wait 30 seconds.
2. Connect an Ethernet cable between the camera and an available port on a router (connected to your network), or directly to a PC.

Note: By default, this camera obtains an IP address from a DHCP server on the local network. To find the IP address of the camera, consult the DHCP client list on the DHCP server of your wireless router or use the IP Config tool found in the e-ipcam-whnpt-v4.zip available on our [website](#).

However, if there is no DHCP server available, or if you are connecting the camera directly with your PC without another device in-between, use the IP Config tool to discover the IP address.



3. Open a browser (Internet Explorer, Firefox, etc) on that PC and enter the IP found in the client list or in the IP Config tool. (If you are not going to change the IP address, you can use that IP address on the ENVIROMUX "Configure IP Camera" page.)

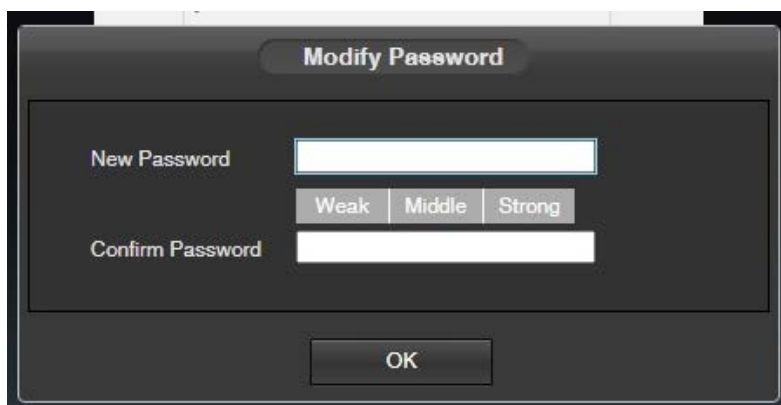
4. The login window will pop up.

5. Enter the default user name "admin" and default password "admin" (all lowercase letters).

6. Click "Login".

You now have access to all internal settings of the camera.

If you make changes to the network settings, you will have to reset the IP camera and you will be forced to change the password. Please select a password that is at least 8 characters long, and include a combination of uppercase letters, lowercase letters, and numbers. Be sure to make note of the new password.



Note: To use the E-IPCAM-WHNPT-V4 or the E-IPCAM-HNPO-P with the E-MINI-LXO, E-1W, E-MICRO-TRHP and for E-mailing snapshots on the E-xD, you must first disable ONVIF Authentication in the camera's software. (ONVIF Authentication is enabled by default.) After changing the setting, click "Save".

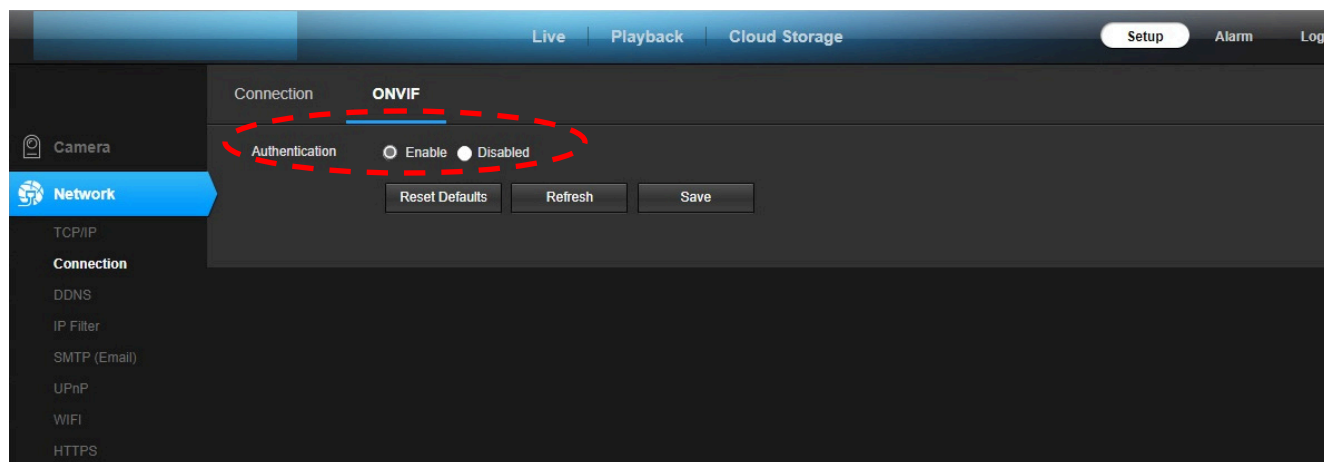


Figure 5- ONVIF Authentication is disabled